

# Christian Community at Work

2024 Community Impact Report

# Corporate Overview

- **Mission:** Christian Community at Work, Inc. is a Christian-based nonprofit corporation organized to connect and encourage Christians to confidently live out their faith in the workplace
- Formally incorporated in Texas on June 10<sup>th</sup>, 2022
  - Obtained IRS Recognition as a 501(c)(3) charity
- Maintains financial stewardship of Christian Community at ExxonMobil and the Alpha Program at ExxonMobil

# 2024 CCW Board of Directors



**President**  
John Dillon



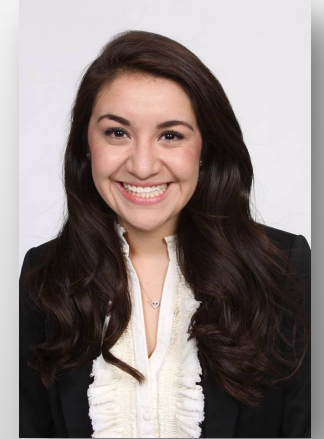
**Vice President**  
Samuel Ortiz



**Secretary**  
Garrett Shaw



**Treasurer**  
Edgar Diaz



**Voting Member**  
Janet Shaw

# 2024 Key Highlights

- Increased clarity about CCEM/CCW
  - Intentionally highlighted Mission, Vision, Values at all events and on website
- Provided support to local team in Budapest to launch a CCEM chapter in Hungary
- Co-Hosted an appreciation concert for CCEM families with Benjamin William Hastings
- Conducted first formal discipleship program at ExxonMobil
- Held Author Talk Series with Jordan Raynor – A leading voice in the Faith & Work Movement
- Developed *Disciple Making at Work* training program; executed program at Faith Bible Church
- Held *High Impact Life* groups on campus to focus on a stewardship approach to leadership
- Building a more intentional culture of prayer, integrating with quarterly events
- CCEM membership exceeded 1,300 members



# 2024 Community Impacts

- Support of 12 ongoing Bible Studies/Prayer Groups at ExxonMobil across Houston Campus, Baytown, Baton Rouge, and Corpus Christi
- Monthly newsletter publication to >1300 unique email addresses to encourage and promote connection events
- CCEM Quarterly Lunches
  - Held quarterly lunches with CCEM community members with guest speakers to provide community encouragement and fellowship (~65-100 attendees/quarter)
- Christian Young Professionals group held several in-person events inside and outside of the office
- Co-Hosted free Radiate Community Concert for CCEM families with Benjamin William Hastings
- Christian Discipleship Program launched for first time
  - 30 New Hires across multiple sites (including US, South America, Europe, Africa and Asia) paired with slightly more experienced Christians for 6 months
    - Provided initiating discussion topics and support for groups

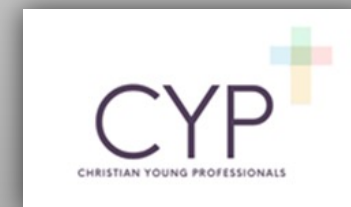


**Radiate Community Concert**



**Community Gathering**

**Worship @Community Gathering**

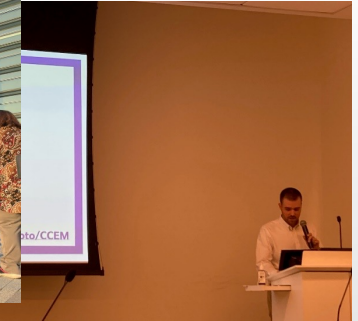


# 2024 Community Impacts Cont.

- Alpha 2024
  - ~65 regular weekly attendees
  - 80+ Volunteers
  - 310+ Global Zoom Channel Members
- National Day of Prayer 2024
- See You at the Pole 2024
  - Gathered ~40 Christians on the front of campus for prayer
- Global Day of Prayer
  - ~310+ attendees gathered in rooms and on Zoom across 38 sites globally
- Author Talks with Jordan Raynor
  - *Sacredness of Secular Work* – Explored how even “secular work” matters to God
    - Purchased 40 copies of Jordan’s book as gifts for CCEM Volunteers
  - *The Royal In You* – Introduced Jordan’s new children’s book to aide in conversations with our children about eternity



See You at the Pole



National Day of Prayer



Global Day of Prayer





# 2024 Community Impacts Cont.

- CCEM Christmas Party
  - ~100 community members gathered for lunch to celebrate Jesus' birth
  - Special message of anticipation and joy
- Supported community member from Budapest to attend a Christian ERG leadership training through Faith & Work Movement & launch a CCEM chapter in Hungary
  - Provided financial support to register for Vision for Work Retreat
  - Providing mentoring support on engagement with HR
  - Providing technical support to build connection site
- Developed *Disciple Making at Work* training program; executed program at Faith Bible Church
- Building a more intentional culture of prayer, integrating with quarterly events
  - Received over 50 individual prayer requests (most for CCEM in a given year!)
  - 2 active weekly prayer groups on campus; 75 email prayer warriors engaged during Alpha



Vision for Work Leadership Retreat - Europe



Christmas Party

**Disciple Making at Work**  
Breaking down walls that separate faith and work, building the Kingdom right where you are.

**Oct 2<sup>nd</sup> – Nov 6<sup>th</sup>**  
Monday Nights: 6:30pm – 8:00pm  
or  
**Oct 4<sup>th</sup> – Nov 8<sup>th</sup>**  
Wednesday Mornings: 6:30am – 8:00am

**Faith Bible Church**  
5505 Research Forrest Drive  
The Woodlands, TX 77381

**Cost: \$15**  
**Register at:** [Disciple Making As You Go](#)

**FAITH**  
Bible Church

**Christian Community at Work**

# 2024 Partnerships

- Worked with various organizations with similar missions and purposes
  - ExxonMobil **VAST** ERG (for service projects)
  - **Faith & Work Movement** - Cross company ERG Leadership mentoring & Author Talks with Jordan Raynor
  - **Grace Center of Spiritual Development** – Local theological seminary (development/use of small group content)
  - **Faith Bible Church** – Development and execution of “Disciple Making at Work” study
  - **Courageous Third** – Shared faith & work specific content for national following





# 2024 Financial Stewardship - CCEM

2024 Christian Community at Work Planned Budget				
No	Activity/Item	2024 Estimated Budget		Spend to Date
1	Technology	\$400.00		(\$395.89)
1.A	Domain Name CCEM	\$20.00	Spend on Plan	(\$12.00)
1.B	Domain Name CCaW	\$20.00	Spend on Plan	(\$12.00)
1.C	Worpress Site	\$100.00	Spend on Plan	(\$102.32)
1.D	Vimeo	\$60.00	Spend on Plan	(\$64.90)
1.E	Squarespace	\$200.00	Spend on Plan	(\$204.67)
2	Events	\$4,800.00		(\$4,036.03)
2.A	1Q23 Community Event	\$900.00	Spend generally on plan	(\$1,027.30)
2.B	2Q23 Community Event	\$900.00	Spend generally on plan	(\$846.36)
2.C	3Q23 Community Event	\$900.00	Spend generally on plan	(\$950.00)
2.D	CCEM Christmas Party	\$2,000.00	Forced to use external vendor; resulted in savings	(\$1,122.36)
2.E	NDOP	\$0.00		\$0.00
2.F	GDOP	\$100.00	Spend on Plan	(\$90.01)
2.G	SYATP	\$0.00		\$0.00
3	CCEM Merchandise	\$1,150.00		(\$520.00)
3.A	Stand up Banners (2)	\$150.00	Did not purchase new banner in 24	
3.B	Logo Design	\$500.00	Logo re-design not conducted in 24	
3.C	Stickers, Mugs, Etc	\$500.00	Purchase of Jordan Raynor Books (Gift)	(\$520.00)
4	CYP Events	\$800.00		(\$399.96)
4.A	Quarterly Lunches (X4)	\$400.00	Spend on Plan	(\$399.96)
4.B	Other Events	\$400.00	~\$84 outstanding charge roll into 25, under spent plan	
5	Outreach Events	\$250.00		\$0.00
5.A	Yes 2 Youth (2X)	\$250.00	Personnell Changes; unable to complete outreach in 24	
6	Study Leads Lunch	\$1,200.00		(\$174.00)
6.A	1Q23 Study Leads Lunch	\$300.00	Efficiency in lunch purchase	(\$174.00)
6.B	2Q23 Study Leads Lunch	\$300.00	Unable to gain quorum for remaining lunches, replaced	
6.C	Study Leads Lunch (X2)	\$600.00	with Jordan Raynor Book as appreciation gift	
7	Contingency	\$750.00		(\$1,380.00)
7.A	Contingency	\$750.00	Contingency utilized for HIL Bundles	(\$1,380.00)
8	Alpha Program	\$490.00		(\$1,170.16)
8.A	February Alpha F2F Meeting	\$60.00	Ramped up Alpha Lunch in 2024, spend offset by	(\$245.76)
8.B	March Alpha F2F Meeting	\$60.00	specified donations	(\$280.00)
8.C	April Alpha F2F Meeting	\$60.00		(\$310.00)
8.D	May Alpha F2F Meeting			(\$80.00)
8.E	Alpha Closing Celebration Lunch	\$250.00		(\$254.40)
8.F	Estimate			
8.G	Contingency	\$60.00		
8	BWH Concert	\$15,000.00		(\$15,000.00)
	BWH Concert	\$15,000.00		(\$15,000.00)
	Total CCW Budget	\$24,840.00		(\$23,076.04)

CCW 2024 Cash Flow (01/01/2024 - YTD)		
Description	Amount	Comments
Starting Balance	\$2,074.29	Roll over cash from 2023 earmarked for CCEM
Alpha Cash Rollover	\$168.94	Roll over cash from 2023 earmarked for Alpha
Expenses	(\$23,076.04)	
Donations	\$34,580.81	
Total Cash Flow	\$13,748.00	CCW available cash as of 1/10/2025

# 2025 Community Impact Plans

- Continuing support of ~12 Bible Study/Prayer Groups on campus
- Continue intentionality of communications
  - Newsletter to highlight a different Bible Study each month
  - Quarterly themes with devotional articles (monthly)
- Continue to develop and increase internal/external partnerships
  - Additional campus ERGs
  - Additional CCEM/CCW chapters (inside and outside of ExxonMobil)
  - CYP/CLPM group
- Continue success of large community gatherings
  - Quarterly community lunches
  - Continued support of staple events (GDOP/NDOP, SYATP, Christmas Party, etc.)
- Focused intentionally on prayer and dependence on God
- Focus development of Christian leaders
  - Discipleship programs, CYP, Intentional invitations to lead events
  - Continue intentional Christian senior leaders' development
  - Take care of current leaders through appreciation and training





# 2025 How You Can Partner?

- Attend a Bible Study, Prayer Group or Community Event
- Start your own Bible Study, Prayer Group, or lead a community event
- Start your own CCW chapter (inside of ExxonMobil or outside of ExxonMobil)
- Tell others (inside of ExxonMobil and outside of ExxonMobil) about CCW and what our organization can offer (visit [www.ChristianCommunityatWork.org](http://www.ChristianCommunityatWork.org) to learn more)
- Pray for God to move in workplaces across the globe
  - Prayer for leadership to have wisdom to lead the organization well
  - Prayer for new leaders to be identified and to feel called to engage
- Consider financially supporting our mission





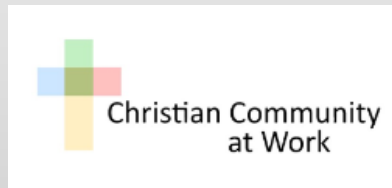
# Ways to Give\*

**\*Note:** You are **never** required to give in order to be a part of, or to attend events organized by, CCW, CCEM, Alpha or any other program through CCW. Giving is a personal choice if you should feel called to do so.

Visit: [www.ChristianCommunityatWork.org/take-action](http://www.ChristianCommunityatWork.org/take-action)

\* All gifts to Christian Community at Work, Inc. are tax deductible

## Credit/Debit/PayPal



## Venmo



Christian Community at Wor...  
@ChristianCommunityatWork



**venmo**

## Check

**Made out to:** Christian Community at Work, Inc.

[Contact Us](#) for best delivery method  
([giving@christiancommunityatwork.org](mailto:giving@christiancommunityatwork.org))

# Donating Stock to CCAW

**\*Note:** You are **never** required to give in order to be a part of, or to attend events organized by, CCW, CCEM, Alpha or any other program through CCW. Giving is a personal choice if you should feel called to do so.

\* All gifts to Christian Community at Work, Inc. are tax deductible

## HOW IT WORKS

Donating stocks is a great way for donors like you to contribute to a nonprofit organization without having to write a check.

Simply visit our website at Visit: [ChristianCommunityatWork.org/take-action](https://ChristianCommunityatWork.org/take-action), click the "**Donate Stock via Stock Donator**" button, and follow the prompts.

Stock Donator provides a secure, fast, and simple web-enabled service for you to donate stock directly to Christian Community at Work Inc., a 501(c)3 nonprofit charitable organization.

**Thank you for your support!**

# 2025 Planned Budget

2025 Christian Community at Work Planned Budget				
No	Activity/Item	2024 Estimated Budget		Basis
1	Technology	\$400.00		
1.A	Domain Name CCEM	\$20.00	Historical Costs	
1.B	Domain Name CCaW	\$20.00	Historical Costs	
1.C	Worpress Site	\$100.00	Historical Costs	
1.D	Vimeo	\$60.00	Historical Costs	
1.E	Squarespace	\$200.00	Historical Costs	
2	Events	\$5,700.00		
2.A	1Q25 Community Event	\$1,200.00	Assuming ~75 people @ 15/person	
2.B	2Q25 Community Event	\$1,200.00	Assuming ~75 people @ 15/person	
2.C	3Q25 Community Event	\$1,200.00	Assuming ~75 people @ 15/person	
2.D	CCEM Christmas Party	\$2,000.00	Assuming ~110 people @ 18/person	
2.E	NDOP	\$0.00	Historical Costs	
2.F	GDOP	\$100.00	Historical Costs	
2.G	SYATP	\$0.00	Historical Costs	
3	CCEM Merchandise	\$1,000.00		
3.B	Logo Design	\$500.00	Budget Roll Over	
3.C	Stickers, Mugs, Etc	\$500.00	Budget Roll Over	
4	CYP Events	\$800.00		
4.A	Lunches	\$400.00		
4.B	Other Events	\$400.00		
5	Outreach Events	\$400.00		
5.A	Outreach Events	\$400.00		
6	Study Leads Lunch	\$800.00		
6.A	1H25 Study Leads Lunch	\$400.00	Historical Costs	
6.B	2H25 Study Leads Lunch	\$400.00	Historical Costs	
6.C	Study Leads Lunch (X2)			
7	CLPM Dinners	\$2,400.00		
7.A	1Q25 CLPM Dinner	\$600.00		
7.B	2Q25 CLPM Dinner	\$600.00		
7.C	3Q25 CLPM Dinner	\$600.00		
7.D	4Q25 CLPM Dinner	\$600.00		
8	Contingency	\$1,150.00		
8.A		\$1,150.00		
9	Alpha Program	\$1,650.00		
9.A	February Alpha F2F Meeting	\$300.00	Based on 2024 Spend	
9.B	March Alpha F2F Meeting	\$300.00	Based on 2024 Spend	
9.C	April Alpha F2F Meeting	\$300.00	Based on 2024 Spend	
9.D	May Alpha F2F Meeting	\$300.00	Based on 2024 Spend	
9.E	Alpha Closing Celebration Lunch	\$300.00	Based on 2024 Spend	
9.G	Contingency	\$150.00		
10	Other Events	\$3,000.00		
	High Impact Life Bundles X2	\$3,000.00	Based on 2024 Spend	
Total CCW Budget		\$17,300.00		
Donations				
2025 Starting Balance		\$13,748.00		
Total 2024 CCW Need/Surplus		(\$3,552.00)		







# Thank you

Thank you for your support connecting and encouraging Christians to confidently live out their faith in the workplace