

Christian Community at Work

2022 Stewardship Report

Table of Contents

1.	2022 Key Highlights	2
2.	Board of Directors	3
3.	Mission, Vision, Values	4
4.	Key Priorities	5
5.	2022 Community Impacts	6
6.	External Partnerships	9
7.	2022 Budget and Cash Flow	10
8.	2023 Community Impact Plans	12
9.	How You Can Partner with CCW in 2023	13
10.	2023 Planned Budget	15

2022 Key Highlights

2

- **Mission:** Christian Community at Work, Inc. is a Christian-based nonprofit corporation organized to connect and encourage Christians to confidently live out their faith in the workplace
- Formally incorporated in Texas on June 10th, 2022
 - Obtained IRS Recognition as a 501(c)(3) charity
 - Received exemption from TX State Franchise and Sales Tax
- Transitioned financial stewardship of Christian Community at ExxonMobil and the Alpha Program at ExxonMobil (previously informally stewarded through individuals) to Christian Community at Work, Inc.
- Received first tax-exempt donations in 2022 and issued first tax exempt receipts in January 2023

2022 CCW Board of Directors

3



President
John Dillon



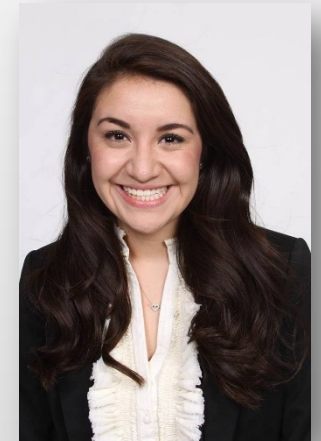
Vice President
Samuel Ortiz



Secretary
Garrett Shaw



Treasurer
George Michael Swift



Voting Member
Janet Shaw

CCW Mission, Vision, Values

Vision

A community where all Christians are walking by faith and love in the workplace

Values

Love all people for all are created in the image of God
(Gen 1:27)

Be Christ centered
(John 3:36)

Honor God through obedience to Christ
(2 John 1:6)

Comply with ExxonMobil policies
(Rom 13:1)

Mission

To connect and encourage Christians to live out their faith in the workplace

CCW Key Priorities

5

Priority #1: **Increase clarity** & positive awareness of CCW

Priority #2: **Enable knowledge** about the fact that you can practice your faith safely in workplace

Priority #3: **Make the benefits apparent** (Why should I live out my faith at work?)

Priority #4: **Encourage & equip Christians** to live out their faith at work

Priority #5: Promote Spiritual Growth of Christians

CCW Team's Current focus is on Priorities 1-4 (Need a Sturdy Base)
Individual Studies & Activity Currently Utilized for Addressing Priorities 4-5*

*Note that per our mission, the CCW Team is not intended to be a governing body or intended to develop and run all, or even the majority, of content for the Christian Community

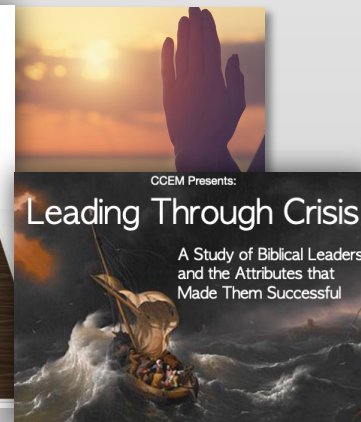
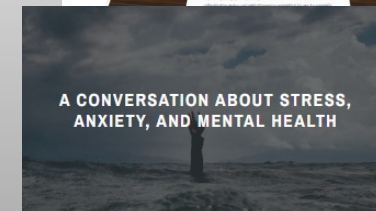
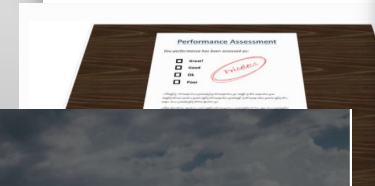
2022 Community Impacts

- Support of 12 ongoing Bible Studies/Prayer Groups at ExxonMobil across Houston Campus, Baytown, Baton Rouge, and Corpus Christi
- Monthly Newsletter Publication to >1000 unique email addresses to encourage and promote connection events
- City Place Leadership Forum
 - Partnered with Cru Houston for promotion of leadership luncheon at City Place Houston Marriott
 - ~250 attendees (mostly ExxonMobil) in attendance to hear from 3 men about leading with a Godly perspective
- CCEM Spring Gathering
 - Community gathering on campus to share CCEM plans and receive feedback
- Christian Young Professionals group held several in-person events
 - 2022 CYP Kickoff Lunch
 - Dine with Doug (Mentoring Lunch with Doug McGeehee)
 - Peace in PDS Panel

CityPlace Leadership Forum⁶



Community Gathering



Christian Community
at Work

2022 Community Impacts Cont.

- Alpha 2022
 - ~50 regular weekly attendees
- National Day of Prayer 2022
- Believing is Seeing – A Conversation with Dr. Michael Guillen
 - Virtual webinar with >150 participants ([Video Here](#))
 - Hosted by CCEM, partnered with Faith & Work Movement for promotion
 - Participants from Amazon, Google, Apple, Meta, Intel, and more
- See You at the Pole 2022
 - Gathered ~20-30 Christians at the front of campus for prayer
- Yes to Youth Outreach
 - CCEM Members played games and brought lunch to children at the Yes to Youth Shelter



National Day of Prayer



Believing is Seeing Event



Yes to Youth Outreach

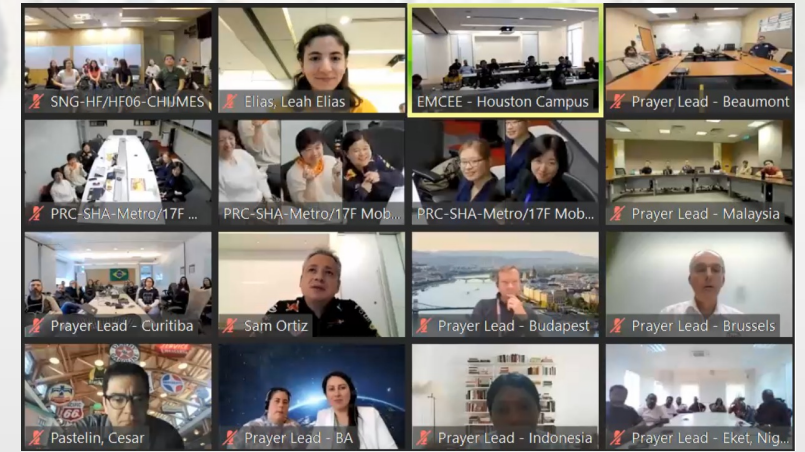


See You at the Pole

2022 Community Impacts Cont.

8

- Global Day of Prayer – Work As Worship Event
 - 462 unique Zoom users dialed into bridge
 - ~100 other gathered at various sites across Houston, China, Singapore, Curitiba, Guyana and Beaumont
- CYP Yes to Youth Food Drive
 - ~\$800 of snacks and drinks donated to children at Yes to Youth
- CCEM Christmas Party
 - ~120 community members gathered for lunch to celebrate Jesus' Birth
 - Special message of Hope & time of worship



Global Day of Prayer



Christmas Party



Yes to Youth Food Drive

2022 Partnerships

9

- Worked with various organizations with similar missions and purposes
 - ExxonMobil **VAST & WIN** ERGs (for service projects)
 - **Faith & Work Movement** - Cross company ERG Leadership mentoring
 - **Kingdom Builders** - Local start up seeking to encourage business leaders to build Christ-Centered businesses
 - **Cru Houston** – Local group “developing leaders from the inside out”
 - **Grace Center of Spiritual Development** – Local Theological Seminary (development/use of small group content)
 - **T-Factor** – Coca-Cola Consolidated initiative to build purpose-driven corporate cultures



2022 Financial Stewardship - CCEM

10

2022 CCEM Financial Plan and Budget (12/31/22 Update)				
<u>Line Item</u>	<u>Estimated Budget</u>	<u>Actual Spend</u>	<u>Delta</u>	<u>Comment</u>
CCEM IT	\$185	\$349	(\$164)	Includes web domain, content hosting costs, etc. Overrun due to purchase of square space and domain for new CCaW
CCEM Events	\$2,000	\$1,586	\$414	Spring Gathering, T-Factor, FT Rally, GDOP, Christmas Party
CCEM Give-Aways	\$800	\$0	\$800	Did not purchase any new items this year, pending rework of website and potential for new branding. Budget carried over to 2023
Young Professionals Events	\$600	\$325	\$275	Provides lunch for the new "Young Professionals" group during YP Study Series
Outreach Events	\$500	\$189	\$311	Yes 2 Youth
CC @ Work Non-Profit Filing etc.	\$1,125	\$325	\$800	Not profit filing ran significantly underbudget due to ability to file 1023 EZ vs full form
Study Leads Lunch	\$200	\$182	\$18	Thank you lunch for CCEM Study Leads for their time and commitment to their groups
2022 Total Budget	\$5,410	\$2,955	\$2,455	
2022 Starting Balance		\$5,533		Carry Over funds from 2021 (donations, cost efficiency)
2022 Donations Actual		\$3,870		
2022 Cashflow		\$6,448		

2022 Financial Stewardship – CCW (Since 6/10 Incorporation)

11

2022 CCEM Financial Plan and Budget (12/31/22 Update)

Line Item	Estimated Budget	Actual Spend	Delta	Comment
CCEM IT	\$185	\$349	(\$164)	Includes web domain, content hosting costs, etc. Overrun due to purchase of square space and domain for new CCaW
CCEM Events	\$2,000	\$1,586	\$414	Spring Gathering, T-Factor, FT Rally, GDOP, Christmas Party
CCEM Give-Aways	\$800	\$0	\$800	Did not purchase any new items this year, pending rework of website and potential for new branding. Budget carried over to 2023
Young Professionals Events	\$600	\$325	\$275	Provides lunch for the new "Young Professionals" group during YP Study Series
Outreach Events	\$500	\$189	\$311	Yes 2 Youth
CC @ Work Non-Profit Filing etc.	\$1,125	\$325	\$800	Not profit filing ran significantly underbudget due to ability to file 1023 EZ vs full form
Study Leads Lunch	\$200	\$182	\$18	Thank you lunch for commitment to their
2022 Total Budget	\$5,410	\$2,955	\$2,455	
2022 Starting Balance		\$5,533		Carry Over funds from
2022 Donations Actual		\$3,870		
2022 Cashflow		\$6,448		

CCW 2022 Cash Flow (6/10/22 - 12/31/2022)

Description	Amount	Comments
Starting Balance	\$4,783.17	Roll over cash from CCEM Personal Account
Alpha Cash Rollover	\$580.32	Roll over cash from Alpha Personal Account (Not included in 2022 CCEM Budget Numbers)
Expenses	(\$2,084.86)	Include Fees for formation filings, web domain hosting, GDOP and Christmas Party
Donations	\$3,750.00	
Total Cash Flow	\$7,028.63	Roll over to 2023 CCW Budget

2023 Community Impact Plans

- Continuing Support of ~12 Bible Study/Prayer Groups on Campus
- Increase intentionality of communications
 - Newsletter to highlight a different Bible Study each month
 - Quarterly themes with devotional articles (monthly)
- Increase clarity about CCEM/CCW
 - Intentional highlight Mission, Vision, Values at all events and on website
 - Increase visual representation through branding
- Continue community outreach through Yes to Youth Program
- Continue to develop and increase internal/external partnerships
 - Additional Campus ERGs
 - Potential for additional CCEM/CCW Chapters (inside and outside of ExxonMobil)
 - Synergize financial accounting for Alpha Program under CCW
 - CYP/CLPM group
- Increase number of large community gatherings
 - Quarterly community lunches
 - Continued support of staple events (GDOP/NDOP, SYATP, Christmas Party, etc.)
- Focus Development of Christian Leaders
 - Discipleship programs, CYP, Intentional invitations to lead events
 - Continue intentional Christian Senior Leaders development
 - Take care of current leaders through appreciation and training



2023 How You Can Partner

13

- Pray for God to move in workplaces across the globe
- Attend a Bible Study, Prayer Group or Community Event
- Start your own Bible Study, Prayer Group, or lead a community event
- Start your own CCW chapter (inside of ExxonMobil or outside of ExxonMobil)
- Tell others (inside of ExxonMobil and outside of ExxonMobil) about CCW and what our organization can offer (visit ChristianCommunityatWork.org to learn more)
- Consider financially supporting our mission



Ways to Give*

14

***Note:** You are **never** required to give in order to be a part of, or to attend events organized by, CCW, CCEM, Alpha or any other program through CCW. Giving is a personal choice if you should feel called to do so.

Visit: ChristianCommunityatWork.org/take-action

* All gifts to Christian Community at Work, Inc. are tax deductible

Credit/Debit/PayPal



Venmo



Christian Community at Wor...
@ChristianCommunityatWork



Check

Made out to: Christian Community at Work, Inc.

[Contact Us](#) for best delivery method
(giving@christiancommunityatwork.org)

2023 Planned Budget

15

2023 Christian Community at Work Planned Budget			
No	Activity/Item	Estimated Budget	Basis
1	Technology	\$410.00	
	Domain Name CCEM	\$25.00	Historical Costs
	Domain Name CCaW	\$25.00	Historical Costs
	Worpress Site	\$100.00	Historical Costs
	Vimeo	\$60.00	Historical Costs
	Squarespace	\$200.00	Historical Costs
2	Events	\$4,150.00	
	1Q23 Community Event	\$750.00	Assuming ~60 people @ ~\$12/person
	2Q23 Community Event	\$750.00	Assuming ~60people @ ~\$12/person
	3Q23 Community Event	\$750.00	Assuming ~60 people @ ~\$12/person
	CCEM Christmas Party	\$1,600.00	Assuming ~100 people @~\$15/person
	NDOP	\$100.00	Based on 2022 GDOP Breakfast
	GDOP	\$150.00	Based on 2022 GDOP Breakfast
	SYATP	\$50.00	Based on 2022 SYATP Breakfast
3	CCEM Merchandise	\$800.00	Roll over of 2022 Budget
	Stand up Banners (2)	\$300.00	Rough Quote
	Stickers, Mugs, Etc	\$500.00	Budgetary Estimate
4	CYP Events	\$600.00	
	Placeholder	\$600.00	Based on 2022 Budget (spent ~50%)
5	Outreach Events	\$500.00	
	Yes 2 Youth (2X)	\$500.00	Based on 2022 actual costs
6	Study Leads Lunch	\$800.00	
	Study Leads Lunch (X4)	\$800.00	Based on 2022 Actual costs
7	Contingency	\$726.00	10% total Spend
8	Alpha Program	\$638.35	
	Estimate	\$580.32	Current Alpha Balance Available
	Contingency	\$58.03	
Total 2023 CCW Budget		\$8,624.35	
2022 Carry Over Funds		\$7,608.95	
Total 2023 CCW Need		\$1,015.40	

Thank you

16

Thank you for your support connecting and encouraging Christians to confidently live out their faith in the workplace